

# Service Information

John Deere Company



Date: 18 April 1975  
Number: CP 75-0  
HORICON

TO: ALL CONSUMER PRODUCT DEALERS

Converting BM15158 3-Point Hitch To Fit 300 Tractor

Because of the quantity of the above hitch in dealer stock, it may be desirable to convert this 3-point hitch to fit the Model 300 Tractor.

Attached are instructions providing the necessary information for the conversion.

John Deere Company  
Syracuse, New York

HSG/DEC

## CONVERTING BM15158 3-POINT HITCH TO FIT 300 TRACTOR

### NEW PARTS NEEDED

<u>Quantity</u>	<u>Part Number</u>	<u>Description</u>
1	AM35852	Rear Hydraulic Kit (Includes AM35855 Fill Tube Assembly)
1	M49436	Bearing
1	M49543	Stop Strap
1	24H1658	Washer, Flat 21/32" x 1" x .060"
1	11H224	Cotter Pin 1/8" x 1-1/4"
1	28H1658	Pipe Spacer
1	37H111	Self-Threading Screw 3/8" x 1-1/4"
2	M43551	Elbow, 45°, Hydraulic Tube Fitting

1. Remove the Left and Right Lower Draft Links, Upper Lift Shaft Bearings, and Upper Lift Shaft Assembly from the 3-Point Hitch Frame.
2. Cut out the template (figure 1) and place it on the outside of the left side plate of the Hitch Frame.
3. Line the areas of the template marked (A) and (B) up with the side plate and scribe a line on the side plate around the cutout portion in the upper left corner. Center punch the two holes marked (C) on the template. The centers must be 1.81 inches apart.
4. Cut along the line marked on the side plate to remove a 2" x 4.44" portion. A cutting torch, sabre saw, and/or hack saw may be used. Remove any burrs or metal spatter after the cut is completed.
5. Drill the two center punched holes. A 13/32" drill will give some tolerance so the bearing holes will line up.
6. See figure 2. Remove the welded stop (A) from the Right Lift Arm to eliminate the possibility of it hitting the fender deck. It can usually be knocked off with a chisel.

7. See figure 3. A 9/64" hole must be drilled at (A). The pin has been case hardened, so it will be necessary to grind or file approximately 1/32" of material off both sides of the pin where the drill will penetrate. After the hardened surface material has been removed, center punch the pin approximately .36" from the arm. The hole should be drilled as close to the end of the pin as possible, while still leaving enough material so it won't push thru.
8. See figure 4. Install the Upper Lift Shaft Assembly using the new M49436 Bearing on the left end. The bushing is not centered on the flange and must be installed up and toward the tractor. Use the new 37H111 Self-Threading Screw at (A).
9. See figure 5. Install the Left Lower Draft Link including the new Stop Strap as shown with the longest slot at the top and the short slot next to spacer (A). Use the new 28H1658 Spacer (A) in place of the one which was removed earlier. Install the Right Lower Draft Link.
10. Place the Stop Strap over the pin at (B) and use a 21/32" x 1" x .060" washer and 1/8" cotter pin to hold it in place.
11. Refer to the last page of the attached parts list. Remove the 90° Elbow (item 3) from each hydraulic hose and replace the male hydraulic coupler tips on each hose end.
12. See figure 6. Install a new M43551 45° Elbow (A) at the cylinder end of each hose and position all fittings as shown.
13. Follow the Instructions packed with the AM35852 Rear Hydraulic Kit and BM15158 3-Point Hitch to complete installation.

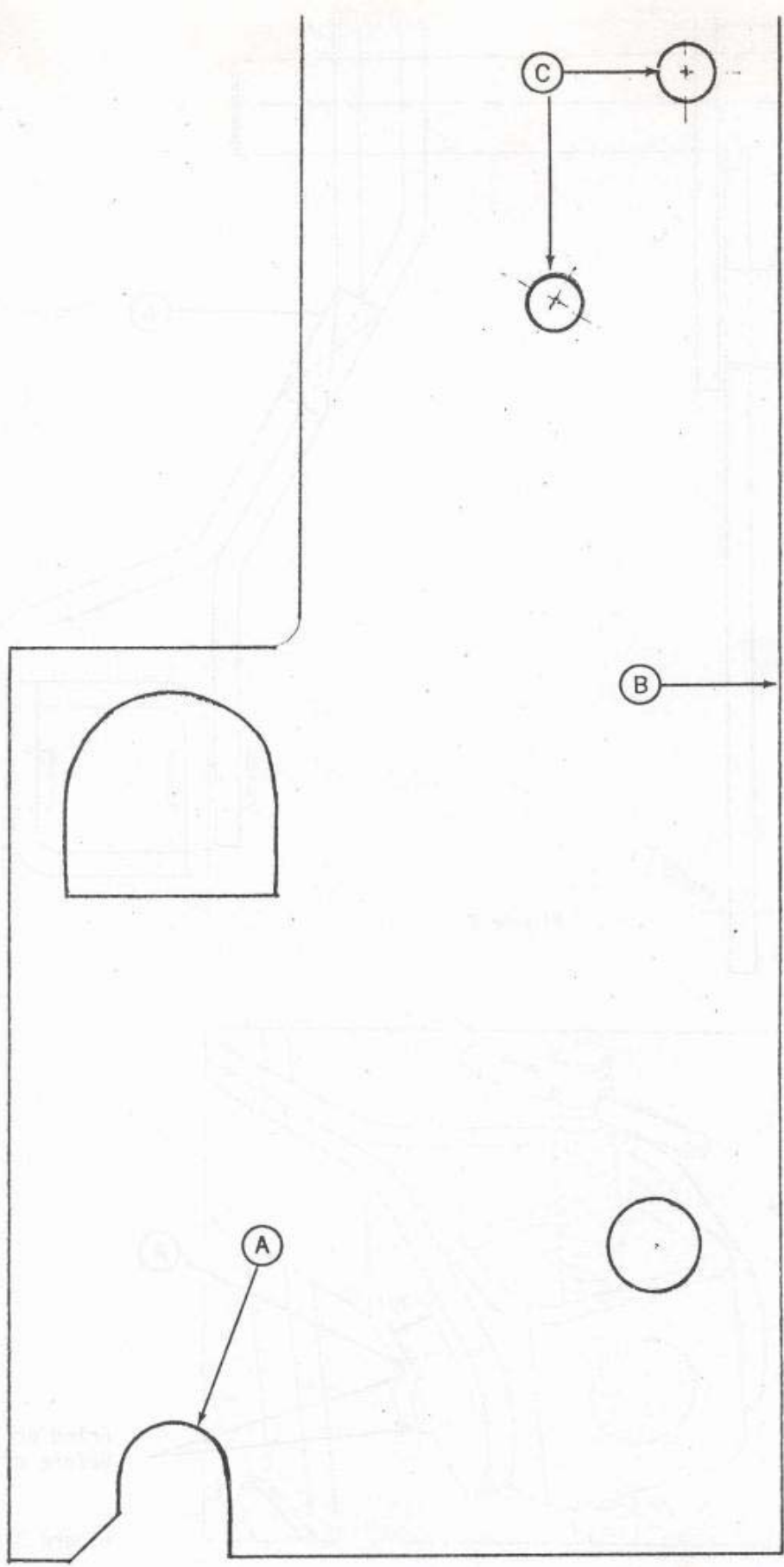


Figure 1

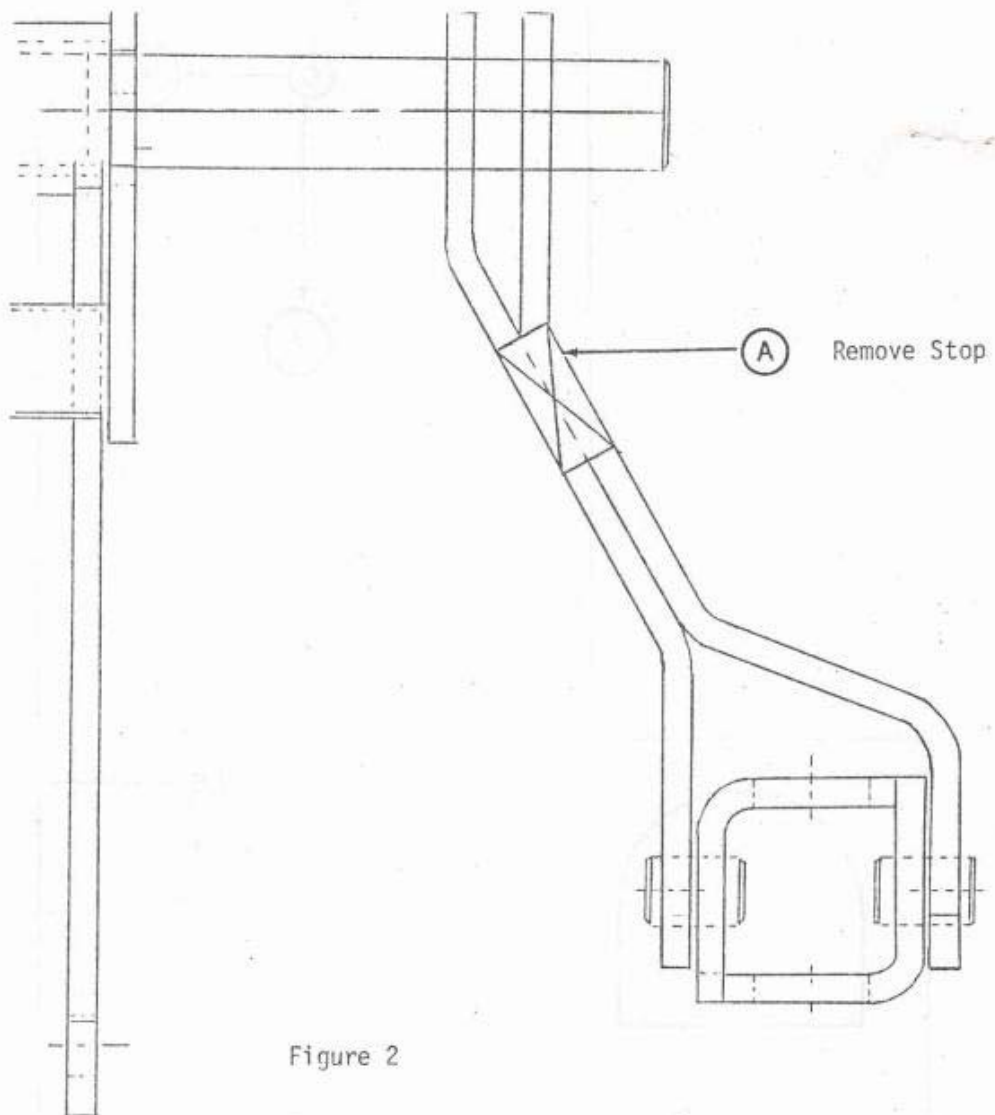
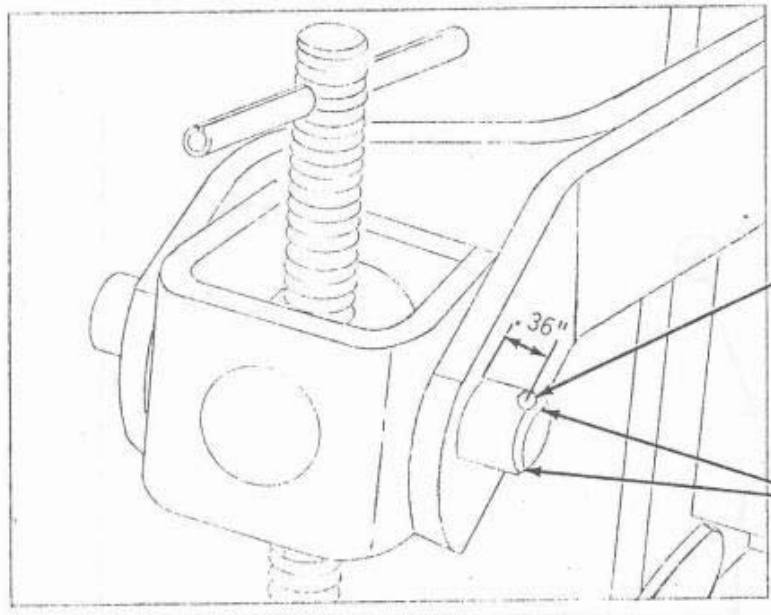


Figure 2



Grind or file surface before drilling

Figure 3

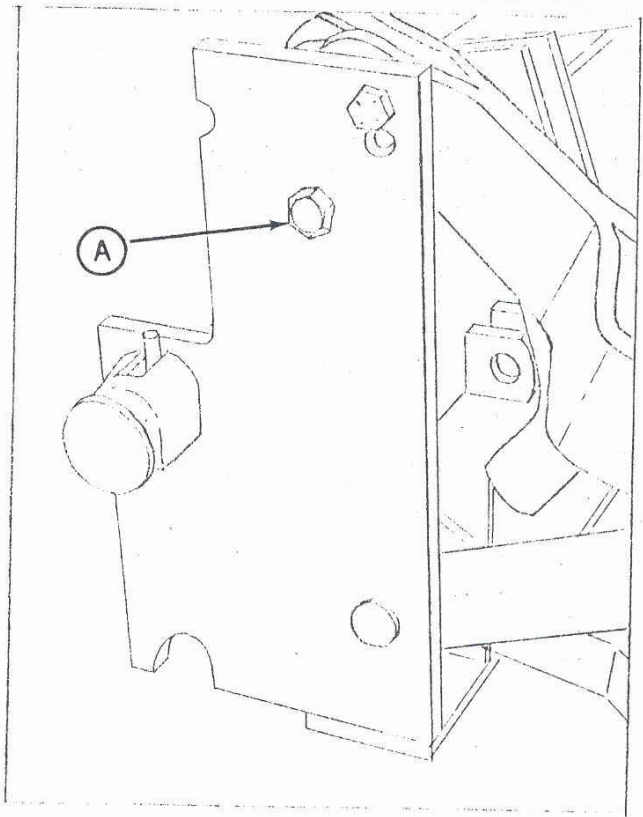


Figure 4

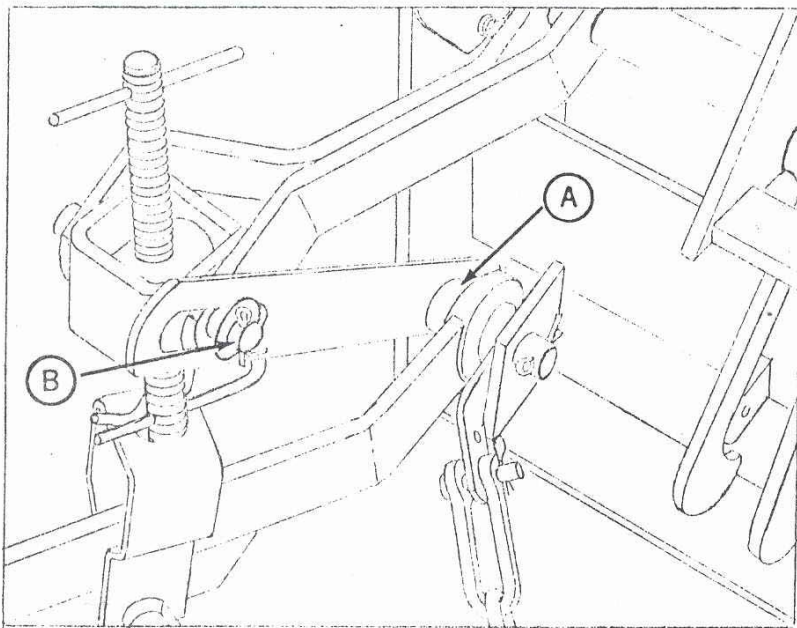


Figure 5