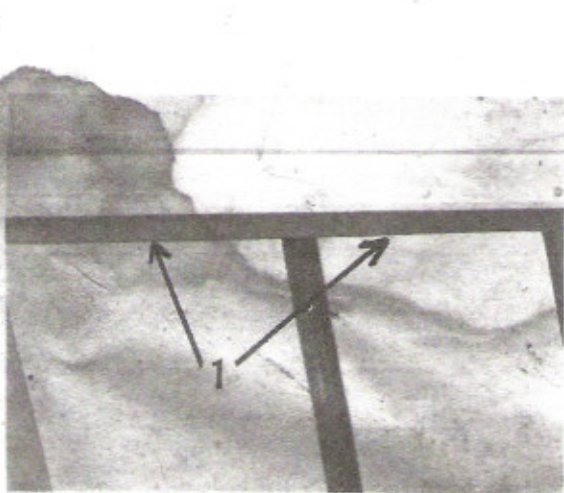
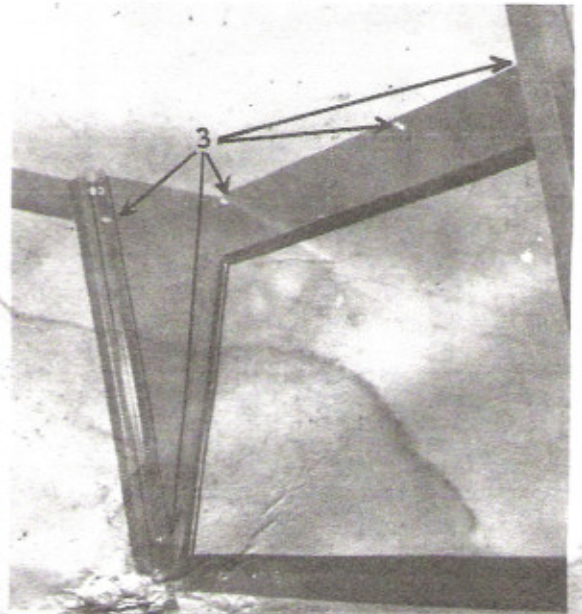


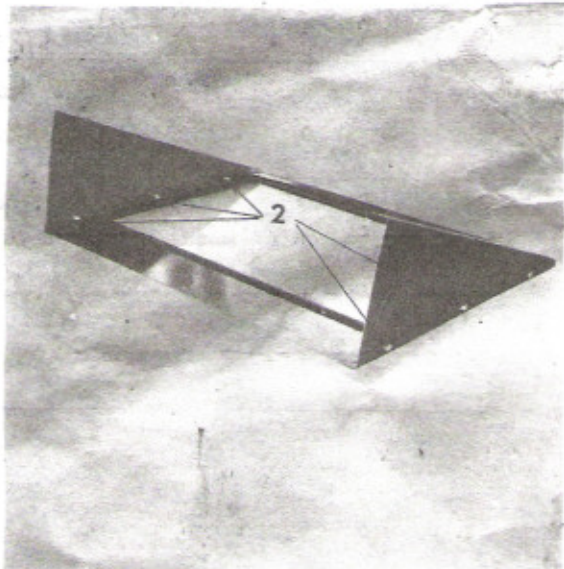
# Installation Instructions for Part No. TY 2034 Windshield & Enclosure for JOHN DEERE 140 Lawn and Garden Tractor



1. Loosen bolts holding top to uprights and slide top filler plates between top and uprights. Bolt using  $\frac{1}{4}$ " x  $\frac{3}{4}$ " hex head bolts, lock washers and nuts. (Flange goes to inside, notch on back edge and heads of bolts to outside). Tighten bolts holding top to uprights.



3. Slide windshield up under top and in front of door posts. Windshield will slide up easily if flanges are bent in slightly along rear edge. Bolt to top and to door post using  $\frac{1}{4}$ " x  $\frac{1}{2}$ " hex head bolts, lock washers and nuts. Heads of bolts to outside.



2. Bolt side flanges of windshield to windshield using  $\frac{1}{4}$ " x  $\frac{1}{2}$ " hex head bolts, lock washers and nuts. Flanges go inside of windshield and heads of bolts to outside. Bent part or bottom of windshield turns up same as flanges.

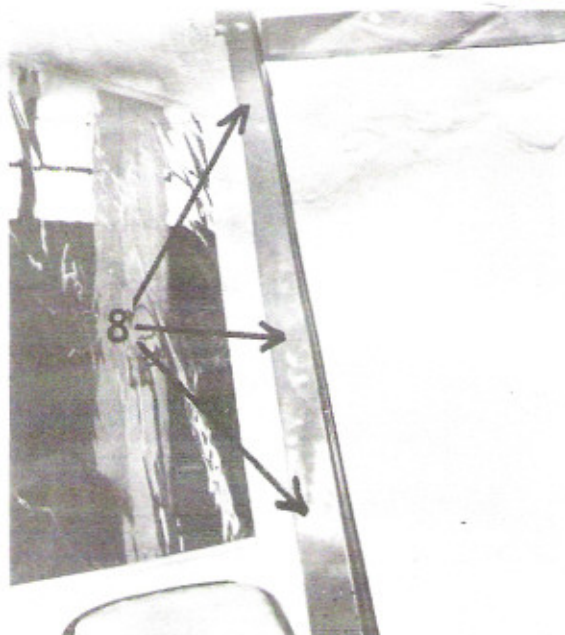


4. Slide short metal strips in top-hem of motor cover. Be sure center of canvas lines up with center hole in metal strips. Bolt to bottom of windshield using  $\frac{3}{16}$ " x  $\frac{1}{2}$ " round head bolts, lock washers and nuts. (Heads of bolts toward driver).
5. Slide short metal strips in side hems of motor cover and bolt to door posts. Metal strips lay inside of door post and heads of bolts to outside. Use  $\frac{3}{16}$ " x  $\frac{1}{2}$ " round head bolts, lock washers and nuts.

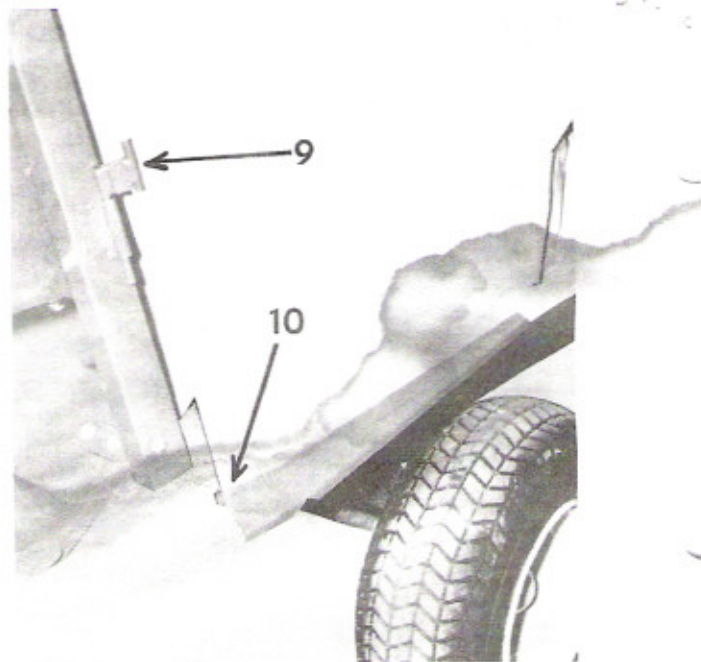




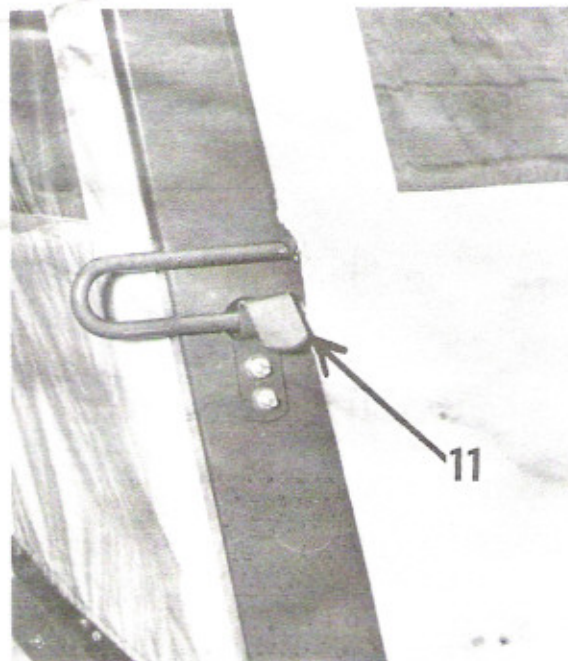
6. Slide short flat metal strip in to top of rear curtain being sure center of curtain is lined up with center of flat strip. Bolt to top using  $3/16'' \times 1/2''$  round head bolts, lock washers and nuts. Metal strip goes inside of top and heads of bolts to outside.
7. Bolt bottom edge same as top. Stuff piece of poly in hole between fender and rear uprights.



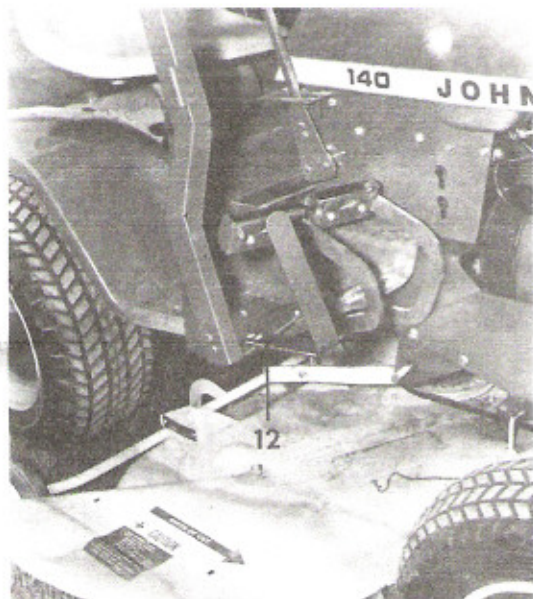
8. Slide long metal strips into hems on sides of rear curtain. Fasten to uprights using self threaded screws.



9. Install doors by sliding door hinges into tubes on front of door posts.
10. Bolt bottom filler plate to bottom of door using  $3/16'' \times 3/4''$  round head bolts, lock washers and nuts. Heads of bolts go to outside of door.



11. Insert  $1/4'' \times 3/4''$  carriage bolts into door latches and put on lock washers and nut. Slide heads of carriage bolts into slots in uprights. Close doors and slide latch up under door handle so it puts a little tension on door. Tighten nuts. Place cap nuts over ends of bolts.



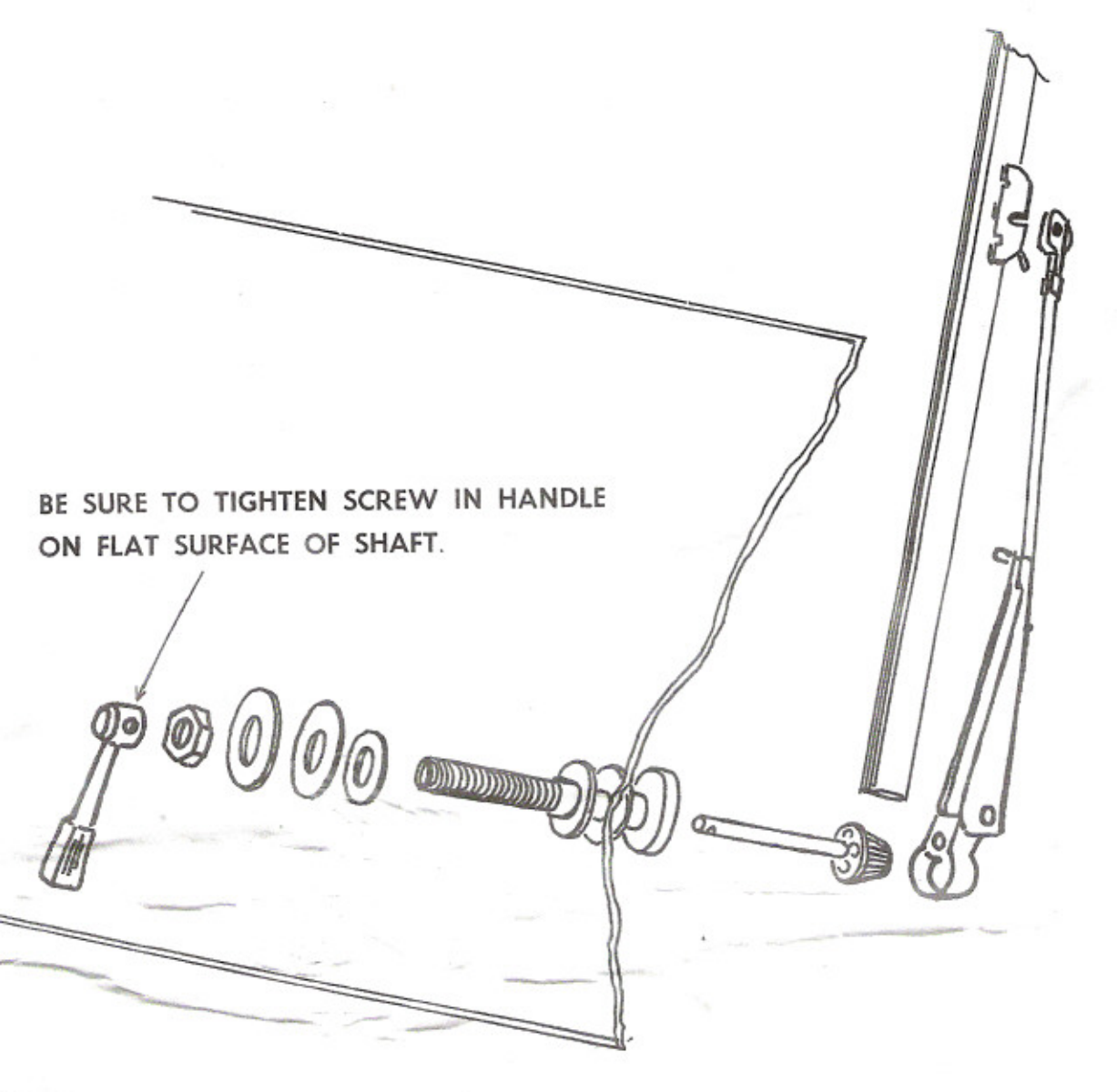
12. Bolt pedal guard to right support bracket using  $\frac{1}{4}$ " x  $\frac{3}{4}$ " hex head bolts and nuts.



13. Straighten motor cover out and fasten elastics in front of hood and under frame of tractor.

14. See reverse side for installation of Windshield Wiper.





BE SURE TO TIGHTEN SCREW IN HANDLE  
ON FLAT SURFACE OF SHAFT.

### TO ADJUST

#### FOR CORRECT LENGTH—

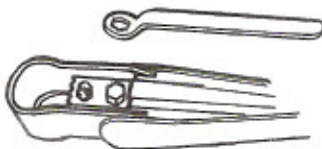
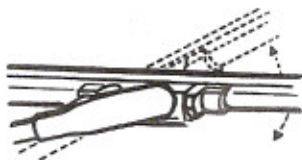
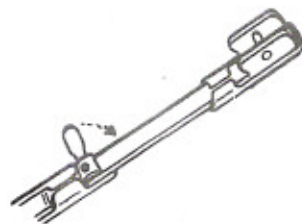
With EXTENSION LOCK open, adjust arm to same length as old arm. Close EXTENSION LOCK.

#### FOR CORRECT BLADE ANGLE—

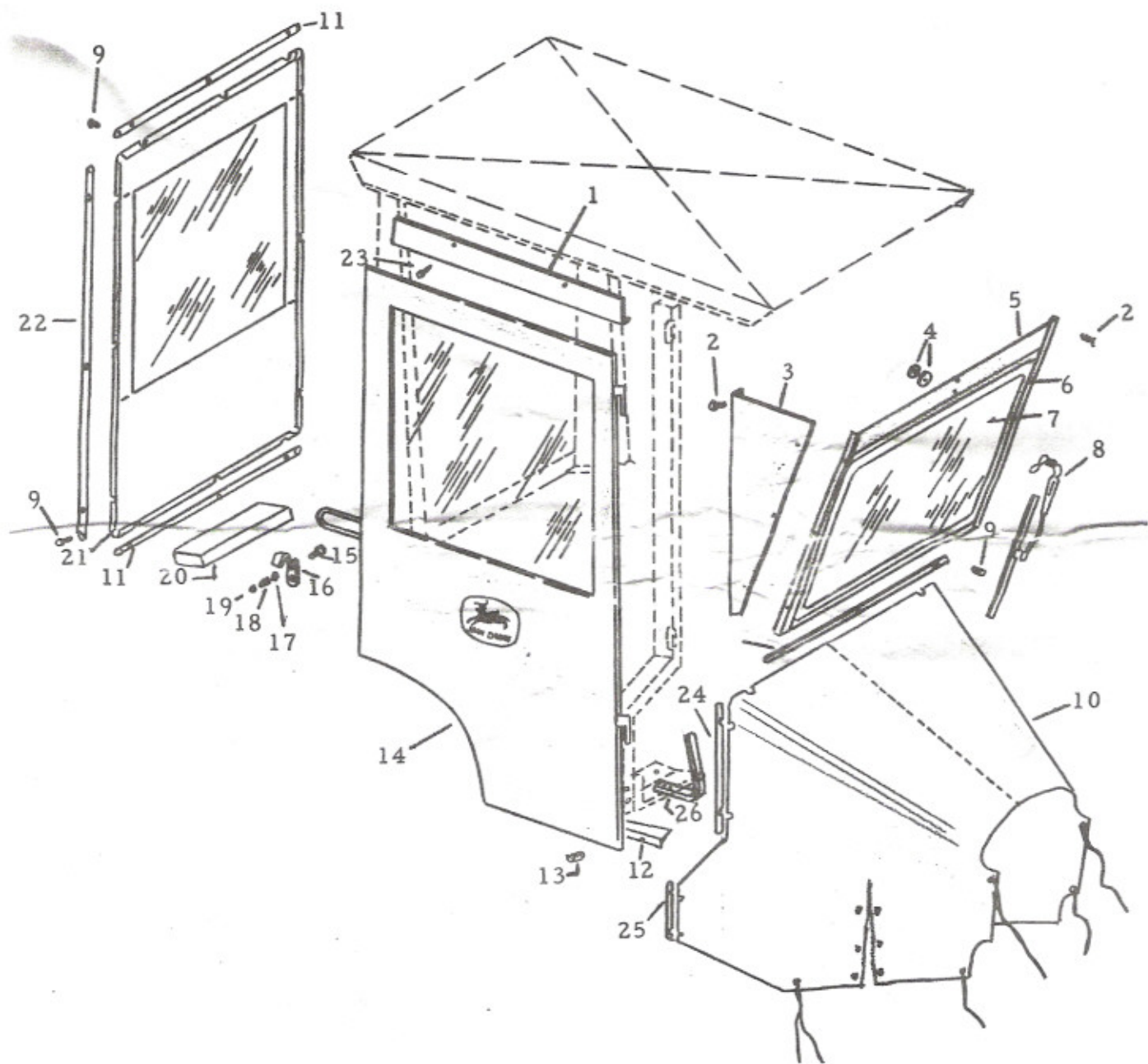
Turn blade right or left until parallel with windshield frame.

#### FOR CORRECT PRESSURE—

Turn PRESSURE ADJUSTMENT NUT (underside of arm) clockwise to increase pressure, counterclockwise to decrease pressure.



TRACTORS - LAWN AND GARDEN - 140  
WEATHER ENCLOSURE FOR SUN TOP (HINSON)



Key	Part No.	Serial No.	Description
1	TY2267	( - )	Filler, Door, Top, R.H.
	TY2266	( - )	Filler, Door, Top, L.H.
2	19H1227	( - )	Screw, Cap, 1/4" x 1/2" (17 used)
	12H302	( - )	Washer, Lock, 1/4"
	14H786	( - )	Nut, Hex, 1/4"
3	TY2277	( - )	Extension, Windshield, R.H.
	TY2270	( - )	Extension, Windshield, L.H.
4	24H1211	( - )	Washer, Flat, 9/16" x 1-3/8" (2 used)
5	TY2275	( - )	Frame, Windshield
6	TY2276	( - )	Molding, Windshield
7	TY2274	( - )	Windshield
8	TY2278	( - )	Wiper, Windshield
9	21H1019	( - )	Screw, Mach., 3/16" x 1/2" (15 used)
	12H246	( - )	Washer, Lock, 3/16"
	14H778	( - )	Nut, Hex, 3/16"
10	TY2294	( - )	Canvas, Motor Cover
11	TY2279	( - )	Flat Rod, Canvas (4 used)
12	TY2295	( - )	Filler, Door, Bottom, R.H.
	TY2296	( - )	Filler, Door, Bottom, L.H.
13	21H1148	( - )	Screw, Mach., 3/16" x 3/4" (4 used)
	12H246	( - )	Washer, Lock, 3/16"
	14H778	( - )	Nut, Hex, 3/16"
14	TY2297	( - )	Door, R.H.
	TY2284	( - )	Door, L.H.
15	3H1701	( - )	Bolt, Cge., 1/4" x 3/4" (4 used)
16	TY2273	( - )	Latch, Door (2 used)
17	12H302	( - )	Washer, Lock, 1/4" (21 used)
18	14H786	( - )	Nut, Hex, 1/4" (21 used)
19	TY2198	( - )	Nut, Acorn, 1/4" (4 used)
20	TY2289	( - )	Filler, Rear Support
21	TY2281	( - )	Curtain, Rear
22	TY2280	( - )	Flat Rod, Rear Curtain (2 used)
23	19H1948	( - )	Screw, Cap, 1/4" x 3/4" (4 used)
	12H308	( - )	Washer, Lock, 1/4"
	14H786	( - )	Nut, Hex, 1/4"
24	TY2302	( - )	Flat Rod, Canvas R.H. Top
25	TY2303	( - )	Flat Rod, Canvas R.H. Bottom
26	TY2304	( - )	Pedal Guard
--	TY2034	( - )	Weather Enclosure, Complete