

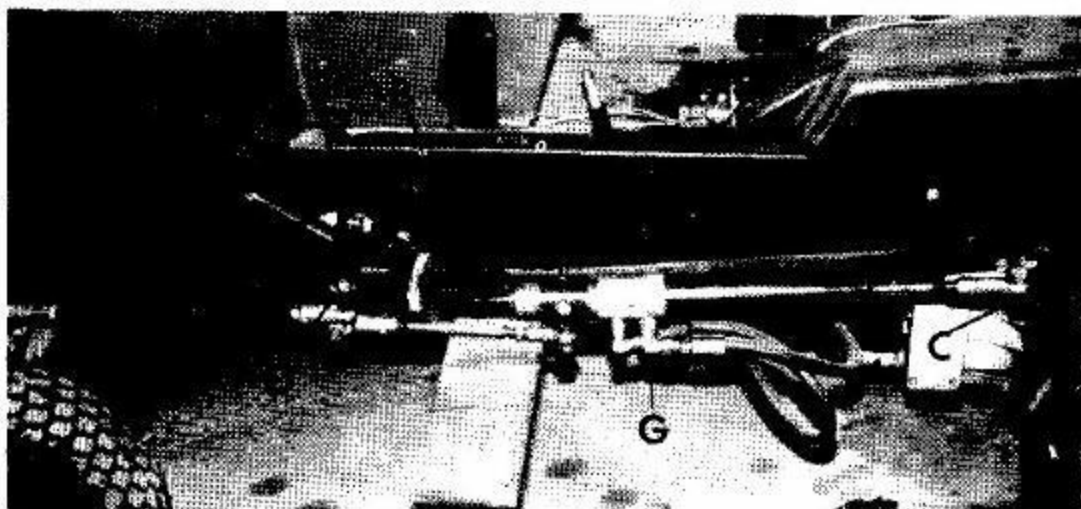


**Brantly Mfg. Co.**

**MOUNTING INSTRUCTIONS  
920-24 POWER STEERING  
FOR  
JOHN DEERE 314/317**

**P.O. Box 187, Frederick, Oklahoma 73542 • 405-335-5593**

**MOUNTING INSTRUCTIONS 920-24 POWER STEERING  
FOR JOHN DEERE 314/317**



**FIG. A - A**

**TRACTOR PREPARATION - PARK TRACTOR ON CONCRETE (OR ASPHALT) SURFACE. SET STEERING SO THAT FRONT WHEELS ARE POINTING STRAIGHT AHEAD WITH PITMAN ARM POINTING STRAIGHT DOWN.**

1. Remove tractor steering rod from pitman arm end at point "A".
2. Bolt JA 32-001 mounting bracket to left hand side of tractor frame as shown in figure 1, using one each  $3/8 \times 1\frac{1}{4}$  (torque at 25 ft. lbs) bolt at front end and one each  $5/16 \times 1\frac{1}{4}$  (torque at 14 ft. lbs.) bolt at rear end of bracket, secure with lockwashers and nuts provided. (This bracket is not required if Model 532 loader is already installed on tractor.)
3. Slide JB 32-001 front guide arm thru slot in lug on JA 32-001 bracket at point "B".
4. Attach rod end of power steering cylinder to top of rear lug on JA 32-001 bracket at point "C" and secure with  $1/2 \times 2$  (torque at 60 ft. lbs.) bolt, lockwasher, and nut.
5. Attach tractor steering rod end (removed in step 1.) to bottom side of JB 32-001 guide arm at point "D" securing with  $1/2 \times 2$  (torque at 60 ft. lbs.) bolt, lockwasher, and nut.
6. Attach JC 32-001 pitman rod end to tractor pitman arm at point "A" using bolt and hardware removed in step 1.
7. Check overall adjustment as follows: With front wheels set straight forward and tractor pitman arm pointing straight down, there should be  $3\frac{1}{2}$  inches of polished rod showing on steering cylinder rod. (Adjust linkage at point "E", if necessary, to obtain  $3\frac{1}{2}$  of polished rod exposed.) This should assure that cylinder is at mid-travel and will allow equal turn radius both right and left.
8. Remove existing return line tubing from tractor valve to tractor reservoir.
9. Install LA-QF090 90° fitting (No. 6 to 6 swivel) at tractor reservoir at point "F". Connect LCFF015-15" hose to the fitting and to return side of power steering valve at point "G".



FIG. B-B

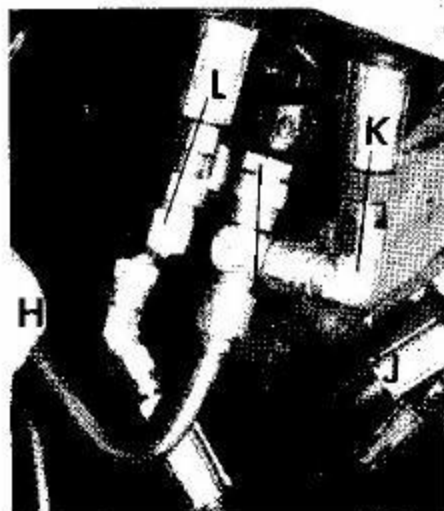
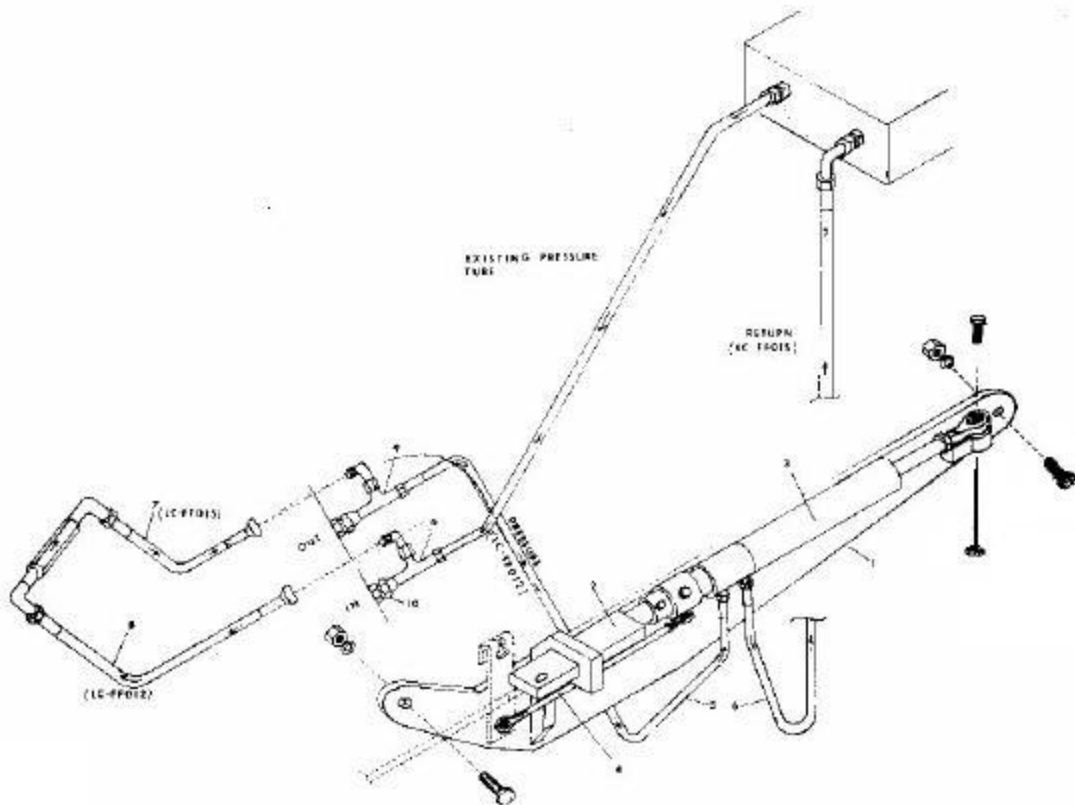


FIG. C-C



FIG. D-D

10. Install LM00-001 TEE (6-6-6 swivel) at output of tractor valve (vacated in step 8). Connect LCFF012-12" hose to end of this tee and to power steering valve input at point "H".
11. Remove end of existing pressure line tube from tractor valve input at point "J". Install LM00-001 Tee (6-6-6 swivel) at this point. Reconnect end of existing pressure line tubing to end of tee just installed
12. Connect one end of LC-FF012 hose to remaining port of tee installed in step 11 (pressure input to tractor valve) at point "K". Connect other end of LC-FF012 hose to input on in-line relief valve JE00-001 at point "L"
13. Connect one end of LC-FF015 hose to output of LC-FF012 relief valve at point "M" and other end at point "N" to remaining port of tee installed in tractor valve output in step 10.
14. Check all bolts and hydraulic connections for proper torque or tightness. Check hose routing to assure free travel of cylinder without binding, scraping, or cutting hoses. Use nylon ties provided to secure hose positions.
15. Start tractor engine and operate steering both right and left, full travel to assure proper operation, clearances, etc.  
**NOTE: REFILL TRACTOR RESERVOIR, AS REQUIRED, TO MAINTAIN PROPER HYDRAULIC FLUID LEVEL AS DEFINED IN TRACTOR OWNER'S MANUAL.**



ITEM	DESCRIPTION	PART NO.	QUANTITY
1.	Bracket, mounting	JA32-001	1
2.	Guide, Steering	JB32-001	1
3.	Cylinder Assembly		1
	A Cylinder	AC00-050	
	B Valve	AA00-001	
	C Tube	AE00-090	
4.	Rod, Pitman	JC32-001	1
5.	Hose, Hydraulic, 15 Inch	LC-FF015	2
6.	Hose, Hydraulic, 12 Inch	LC-FF012	2
7.	Adapter, Tee, 6-6-8 Swivel	LM00-001	2
8.	Adapter, 90°, 6-6 Swivel	LA-QF090	3
9.	Adapter, 90°, 3/8-8	LA-RG090	2
10.	Adapter	LA-UU000	1
11.	Relief Valve, In-line	JE00-001	1
12.	Bolt, Nut, Lockwasher	1/4 x 1 1/4	1
13.	Bolt, Nut, Lockwasher	5/16 x 1 1/4	1
14.	Bolt, Nut, Lockwasher	3/8 x 1 1/4	1
15.	Bolt, Nut, Lockwasher	1/2 x 2	2